

LOGISTICS PARK PHOENIX



Logistics Park Phoenix Newsletter: Tracking for Success

Thanks for signing up for updates regarding BNSF's Logistics Park Phoenix facility! We're excited to have you join us as we plan our facility to support the state's continued growth and prosperity. BNSF is committed to keeping neighbors and the entire community informed as the project moves forward and will issue a newsletter with updates every two weeks as plans progress.

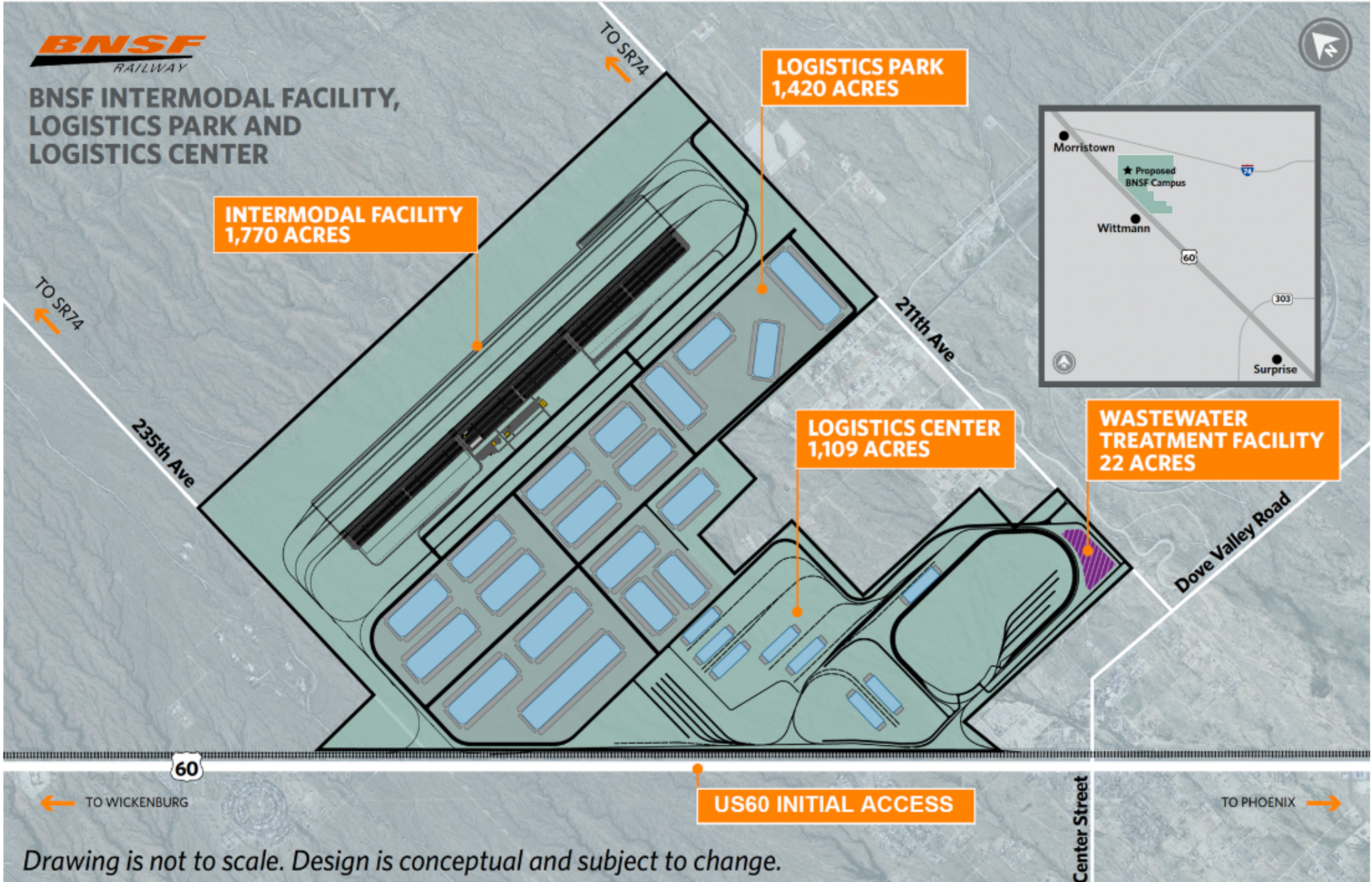
New \$3.2B Rail Hub

BNSF continues to advance plans for Logistics Park Phoenix, a new state-of-the-art 4,320-acre freight rail facility in northwest Maricopa County. The facility will boost Arizona's rail capacity and make it easier to transport, store, and distribute goods throughout the Southwest. Our intermodal terminal, logistics park, and logistics center will seamlessly connect the Phoenix metropolitan area to BNSF's 32,500-mile freight rail network, strengthening Arizona's connection to the global marketplace and improving the supply chain to avoid economic disruption, with operations expected to start in 2028.

The BNSF development team thanks those who have previously attended its community and open house meetings. BNSF values your involvement and input for the planned facility and looks forward to meeting more community members at community meetings, which will be announced in a future newsletter and on the website.

Project Details

- **Intermodal Facility** - serves as a rail terminal for containers and trailers entering Phoenix, enabling local truck distribution or continued rail transport
- **Logistics Park** - adjacent to the intermodal facility, the logistics park will support 18M sf of warehouse space, keeping trucks in a closed-loop facility to reduce traffic and emissions
- **Logistics Center** - provides BNSF rail customers with shovel-ready sites and direct rail access, with BNSF managing leases to ensure safety and environmental compliance



The Benefits



Economy

Supports 50,000+ well-paying jobs and generates more than \$245 million in annual tax revenue for local communities.



Environment

Rail is the most environmentally friendly mode of transportation. Co-locating at a Logistics Park reduces the number of truck miles driven, which helps to lower emissions.



Efficiency

Helps streamline transportation and distribution processes, leading to improved efficiency in the supply chain while reducing congestion and decreasing truck miles traveled.

[Learn more](#)

Thank you for joining us on this journey to enhance Arizona's supply chain. We're excited to keep you informed as the project progresses. Stay tuned for more updates in future newsletters!

Have a Question for Us?

Do you have a question about BNSF or the Logistics Park Phoenix Project? Send it to LPPhoenix@bnsf.com.

Emergencies — Call 800-832-5452

To report a vehicle stalled on a crossing, suspicious circumstances, malfunctioning crossing gates and lights, or any other emergency, call 800-832-5452 immediately.



Copyright © 2025 BNSF Logistics Park Phoenix, All rights reserved.

Thank you for your interest in the Logistics Park Phoenix project. You are receiving this newsletter because you opted in on our website, through text messaging, or attended an event. If you no longer want to receive these emails, you can [unsubscribe](#) from this list.